

ADDITIONAL DAMPER S078C - INSTALLATION GUIDE



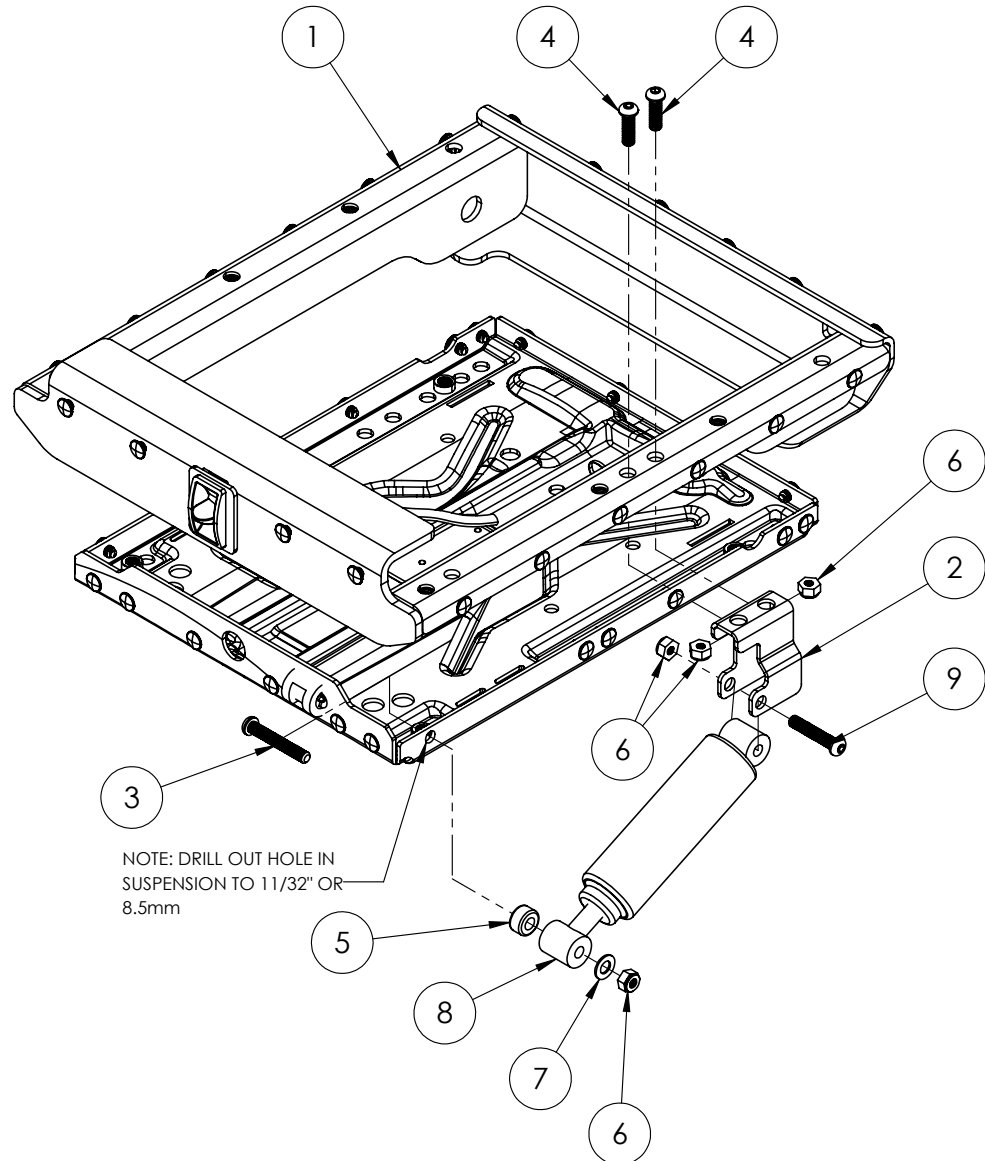
Parts Required for Installation			
Item #	Part #	Description	Qty.
1	N/A	S078C Suspension	N/A
2	330265LH	S078C Double Damper Bracket LH	1
3	200152	M8 X 50mm Button Head Bolt	1
4	200166	M8 X 25mm Button Head Bolt	2
5	200210	3/8" Spacer	1
6	200216	M8 Lock Nut	4
7	200264	5/16" Flat Washer	1
8	870303	S073 Damper	1
9	200151	M8 X 40mm Button Head Bolt	1



Note: S078C Shown using 870303 damper.

For this installation, you will need:

- 1 - Socket Wrench with 1/2" Socket
- 1 - 1/2" Wrench and
- 1 - Utility Knife



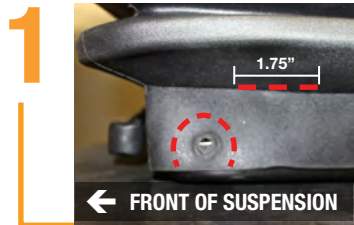
SCAN FOR GUIDES



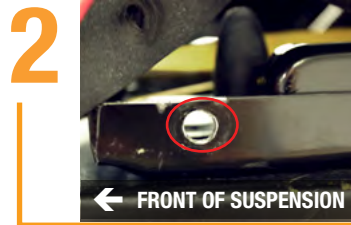
Guides also available at:
<https://www.ultraseat.com/downloads>

#870303

ADDITIONAL DAMPER S078C - INSTALLATION GUIDE



1 While facing the suspension, cut a 1.75" slit in the area located on what is now your right hand side. Make sure you are facing the front of the suspension. Then cut a curve around the existing pilot hole in the boot area indicated in the picture. This will allow you to pull the damper shaft through the boot to mount to the lower part of the suspension.



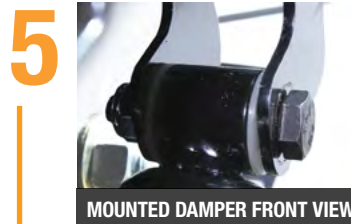
2 Lift suspension boot in same corner as in Step 1 and drill to widen the existing hole to 1 1/32" diameter. It's the 1st hole back from the front of the suspension



3 On the same side as in step 1 and 2, mount the supplied bracket to holes 7 & 8 on the top plate of the suspension.



4 Align the top of the supplied bracket with the underside of holes 7 & 8 and mount using 2 x 200-166 M8 Bolts and 2 x 200-216 Lock Nuts provided.



5 To install the cylinder side of the damper to the bracket you will use 1 x 200-151 Shoulder Bolt, and 1 x 200-216 Lock Nut.



6 Insert the long bolt and slide it through the cylinder side of the damper, then all the way through the other side of the bracket and secure with the lock nut. Your assemble should look like the following pictures when complete.



7 Place the damper inside the suspension boot and pull the damper shaft through the slit you cut in Step 1.



8 Prepare for the damper shaft to be mounted into the suspension base with the following hardware. 1 x 200-152 50mm Bolt, 1 x 3/8" Spacer and 1 x 200-216 Lock Nut. When prepared, it should look like the following picture.



9 Next slide the end of the damper shaft into the suspension base with the following hardware. 1 x 200-152 50mm Bolt, 1 x 3/8" Spacer and 1 x 200-216 Lock Nut.



Completed Installation without Boot

Completed Installation with Boot



SCAN FOR GUIDES



Guides also available at:
<https://www.ultraseat.com/downloads>

#870303

Please visit www.ultraseat.com for more information regarding this product.